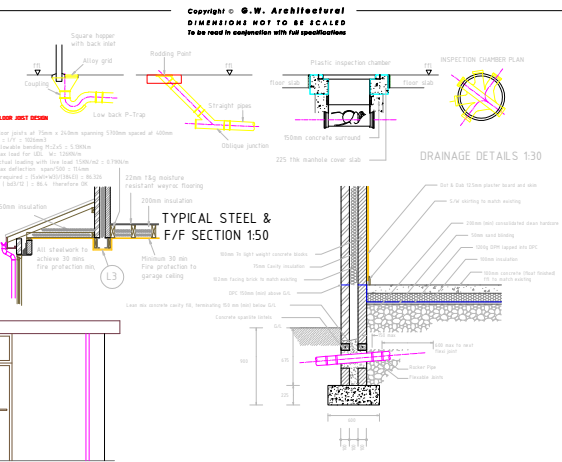
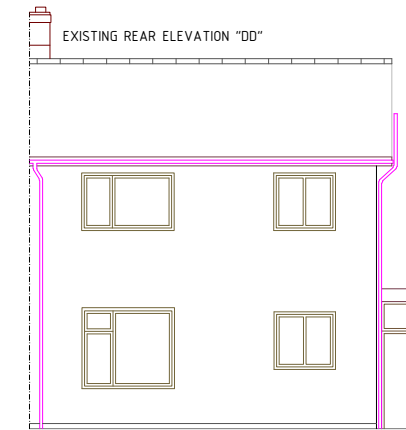
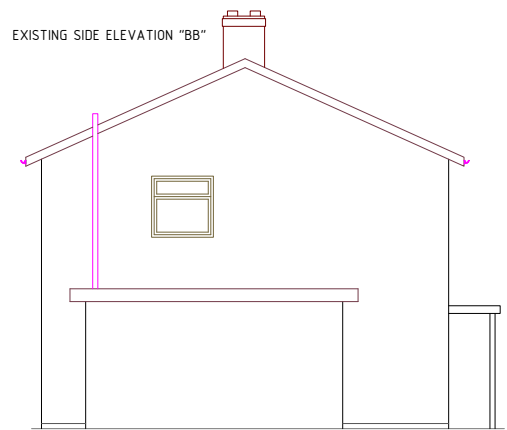
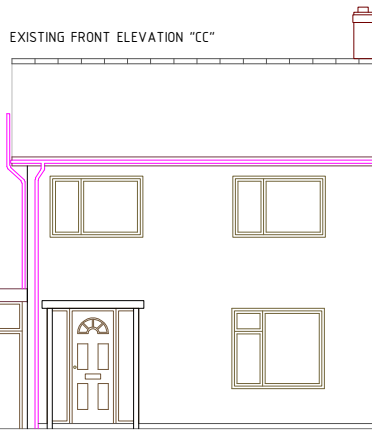
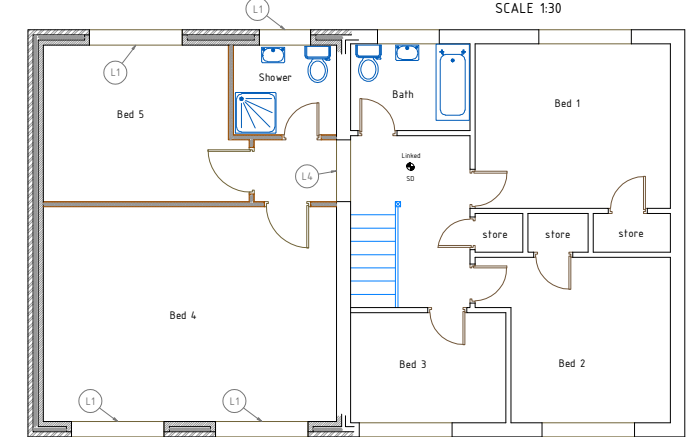
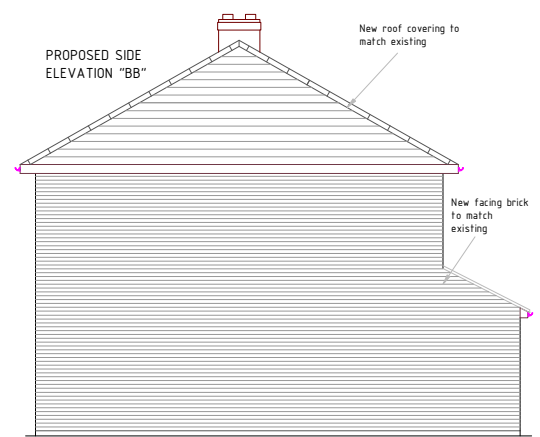
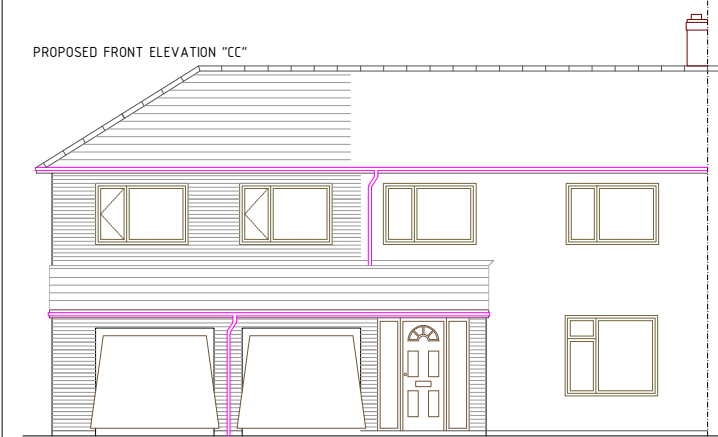


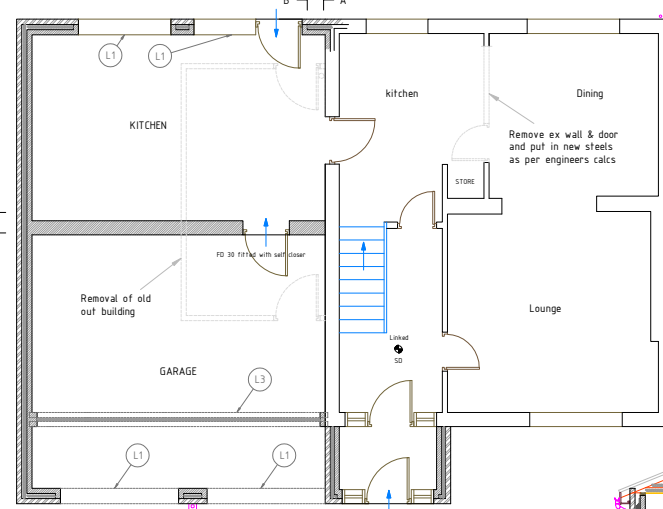
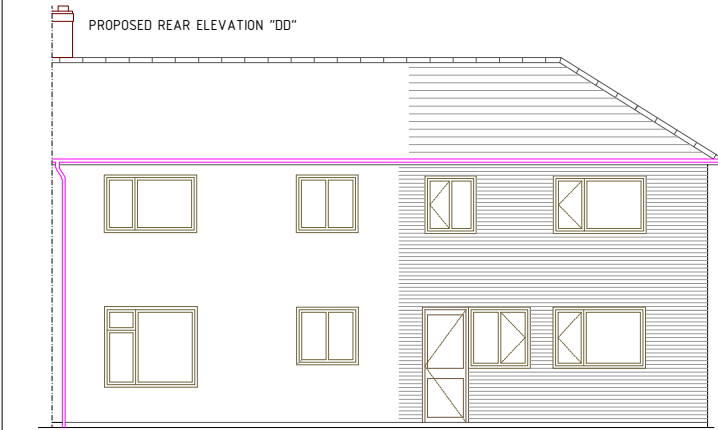
**PROVISIONS**  
 1. All work shall be in accordance with the Australian Building Code Board (ABCB) Building Code of Australia (BCA) and the Australian Standard AS/NZS 1546:2012. The ABCB Building Code of Australia (BCA) is the primary reference for all construction work.  
 2. The ABCB Building Code of Australia (BCA) is the primary reference for all construction work.  
 3. The ABCB Building Code of Australia (BCA) is the primary reference for all construction work.  
 4. The ABCB Building Code of Australia (BCA) is the primary reference for all construction work.  
 5. The ABCB Building Code of Australia (BCA) is the primary reference for all construction work.  
 6. The ABCB Building Code of Australia (BCA) is the primary reference for all construction work.  
 7. The ABCB Building Code of Australia (BCA) is the primary reference for all construction work.  
 8. The ABCB Building Code of Australia (BCA) is the primary reference for all construction work.  
 9. The ABCB Building Code of Australia (BCA) is the primary reference for all construction work.  
 10. The ABCB Building Code of Australia (BCA) is the primary reference for all construction work.



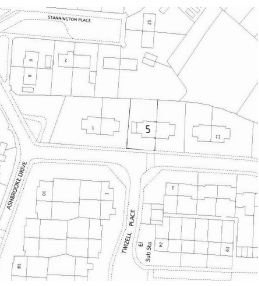
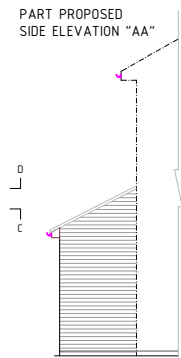
TYPICAL WALL, FLOOR, FOUNDATION & DRAINAGE DETAIL SCALE 1:30



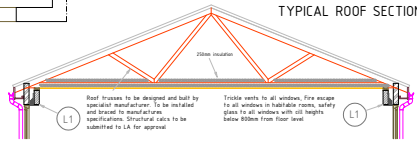
EXISTING & PROPOSED FIRST FLOOR PLAN



EXISTING & PROPOSED G/F PLAN



TYPICAL ROOF SECTION



**ROOFING WORK**  
 1. The roof shall be constructed in accordance with the ABCB Building Code of Australia (BCA) and the Australian Standard AS/NZS 1546:2012.  
 2. The roof shall be constructed in accordance with the ABCB Building Code of Australia (BCA) and the Australian Standard AS/NZS 1546:2012.  
 3. The roof shall be constructed in accordance with the ABCB Building Code of Australia (BCA) and the Australian Standard AS/NZS 1546:2012.  
 4. The roof shall be constructed in accordance with the ABCB Building Code of Australia (BCA) and the Australian Standard AS/NZS 1546:2012.  
 5. The roof shall be constructed in accordance with the ABCB Building Code of Australia (BCA) and the Australian Standard AS/NZS 1546:2012.  
 6. The roof shall be constructed in accordance with the ABCB Building Code of Australia (BCA) and the Australian Standard AS/NZS 1546:2012.  
 7. The roof shall be constructed in accordance with the ABCB Building Code of Australia (BCA) and the Australian Standard AS/NZS 1546:2012.  
 8. The roof shall be constructed in accordance with the ABCB Building Code of Australia (BCA) and the Australian Standard AS/NZS 1546:2012.  
 9. The roof shall be constructed in accordance with the ABCB Building Code of Australia (BCA) and the Australian Standard AS/NZS 1546:2012.  
 10. The roof shall be constructed in accordance with the ABCB Building Code of Australia (BCA) and the Australian Standard AS/NZS 1546:2012.

**WALLS AND CEILING WORK**  
 1. The walls and ceiling shall be constructed in accordance with the ABCB Building Code of Australia (BCA) and the Australian Standard AS/NZS 1546:2012.  
 2. The walls and ceiling shall be constructed in accordance with the ABCB Building Code of Australia (BCA) and the Australian Standard AS/NZS 1546:2012.  
 3. The walls and ceiling shall be constructed in accordance with the ABCB Building Code of Australia (BCA) and the Australian Standard AS/NZS 1546:2012.  
 4. The walls and ceiling shall be constructed in accordance with the ABCB Building Code of Australia (BCA) and the Australian Standard AS/NZS 1546:2012.  
 5. The walls and ceiling shall be constructed in accordance with the ABCB Building Code of Australia (BCA) and the Australian Standard AS/NZS 1546:2012.  
 6. The walls and ceiling shall be constructed in accordance with the ABCB Building Code of Australia (BCA) and the Australian Standard AS/NZS 1546:2012.  
 7. The walls and ceiling shall be constructed in accordance with the ABCB Building Code of Australia (BCA) and the Australian Standard AS/NZS 1546:2012.  
 8. The walls and ceiling shall be constructed in accordance with the ABCB Building Code of Australia (BCA) and the Australian Standard AS/NZS 1546:2012.  
 9. The walls and ceiling shall be constructed in accordance with the ABCB Building Code of Australia (BCA) and the Australian Standard AS/NZS 1546:2012.  
 10. The walls and ceiling shall be constructed in accordance with the ABCB Building Code of Australia (BCA) and the Australian Standard AS/NZS 1546:2012.

**ELECTRICAL WORK**  
 1. The electrical work shall be installed in accordance with the ABCB Building Code of Australia (BCA) and the Australian Standard AS/NZS 3000:2018.  
 2. The electrical work shall be installed in accordance with the ABCB Building Code of Australia (BCA) and the Australian Standard AS/NZS 3000:2018.  
 3. The electrical work shall be installed in accordance with the ABCB Building Code of Australia (BCA) and the Australian Standard AS/NZS 3000:2018.  
 4. The electrical work shall be installed in accordance with the ABCB Building Code of Australia (BCA) and the Australian Standard AS/NZS 3000:2018.  
 5. The electrical work shall be installed in accordance with the ABCB Building Code of Australia (BCA) and the Australian Standard AS/NZS 3000:2018.  
 6. The electrical work shall be installed in accordance with the ABCB Building Code of Australia (BCA) and the Australian Standard AS/NZS 3000:2018.  
 7. The electrical work shall be installed in accordance with the ABCB Building Code of Australia (BCA) and the Australian Standard AS/NZS 3000:2018.  
 8. The electrical work shall be installed in accordance with the ABCB Building Code of Australia (BCA) and the Australian Standard AS/NZS 3000:2018.  
 9. The electrical work shall be installed in accordance with the ABCB Building Code of Australia (BCA) and the Australian Standard AS/NZS 3000:2018.  
 10. The electrical work shall be installed in accordance with the ABCB Building Code of Australia (BCA) and the Australian Standard AS/NZS 3000:2018.

**MECHANICAL WORK**  
 1. The mechanical work shall be installed in accordance with the ABCB Building Code of Australia (BCA) and the Australian Standard AS/NZS 1546:2012.  
 2. The mechanical work shall be installed in accordance with the ABCB Building Code of Australia (BCA) and the Australian Standard AS/NZS 1546:2012.  
 3. The mechanical work shall be installed in accordance with the ABCB Building Code of Australia (BCA) and the Australian Standard AS/NZS 1546:2012.  
 4. The mechanical work shall be installed in accordance with the ABCB Building Code of Australia (BCA) and the Australian Standard AS/NZS 1546:2012.  
 5. The mechanical work shall be installed in accordance with the ABCB Building Code of Australia (BCA) and the Australian Standard AS/NZS 1546:2012.  
 6. The mechanical work shall be installed in accordance with the ABCB Building Code of Australia (BCA) and the Australian Standard AS/NZS 1546:2012.  
 7. The mechanical work shall be installed in accordance with the ABCB Building Code of Australia (BCA) and the Australian Standard AS/NZS 1546:2012.  
 8. The mechanical work shall be installed in accordance with the ABCB Building Code of Australia (BCA) and the Australian Standard AS/NZS 1546:2012.  
 9. The mechanical work shall be installed in accordance with the ABCB Building Code of Australia (BCA) and the Australian Standard AS/NZS 1546:2012.  
 10. The mechanical work shall be installed in accordance with the ABCB Building Code of Australia (BCA) and the Australian Standard AS/NZS 1546:2012.

LINTEL SCHEDULE	
L1	Clastic cover (C20/100) Steel Linel
L2	Reinforced PISA Precast concrete Linel (100 x 250)
L3	Steel to be as structural engineers advise
L4	Use existing linel in situ
Min. bearing for all linels to be 150mm	
<b>G.W. Architectural Design</b> 85 St Richards Way, Low Hill, GOSFORD, NSW 2250 Tel: 02 9397 4200 Fax: 02 9397 4201 www.gwarchitectural.com.au	
Two-storey extension to side & front elevations to provide garage, kitchen & porch to G/F & 2 bed & shower room to 1st floor.	
PROJECT	Location
DESIGNED BY	DATE
DRAWING NO.	AU/06/001
SCALE	1:50
DRAWN BY	Gary Wheatley
DATE	Jun 06